



30

St. Paul's Sq.



## excellence in **every direction**

Nestled on the northern corner of Birmingham's sole surviving Georgian square, 30 St. Paul's Square is the perfect juxtaposition of modernity and heritage, offering exemplary contemporary business space in a characterful and historic environment.

# 30

St. Paul's Sq.



## exceptional **opportunity**

The distinctive glass façade at 30 St. Paul's Square provides a striking counterpoint to its Grade II-listed neighbours, flooding the offices with light and offering a vantage point to take in the stunning vistas.

Each suite also overlooks the landscaped central courtyard, a sanctuary of calm and tranquillity away from the hubbub of the office. From here, a spiral staircase leads to secure subterranean parking.

Fresh from a comprehensive design-led reinvigoration, 30 St. Paul's Square would make an ideal home for the discerning business looking for a stylish city centre base.



## outstanding **space**

Following a recent refurbishment, only three open plan suites remain, ranging from 467 up to 1,873 sq ft. Benefiting from stunning views across the courtyard, each suit can be configured to suit a number of layouts and requirements.

Boasting a contemporary working environment throughout, 30 St. Paul's Square is the perfect opportunity for start-ups and SME businesses looking for an impressive, bright and productive office space.

Occupiers benefit from:

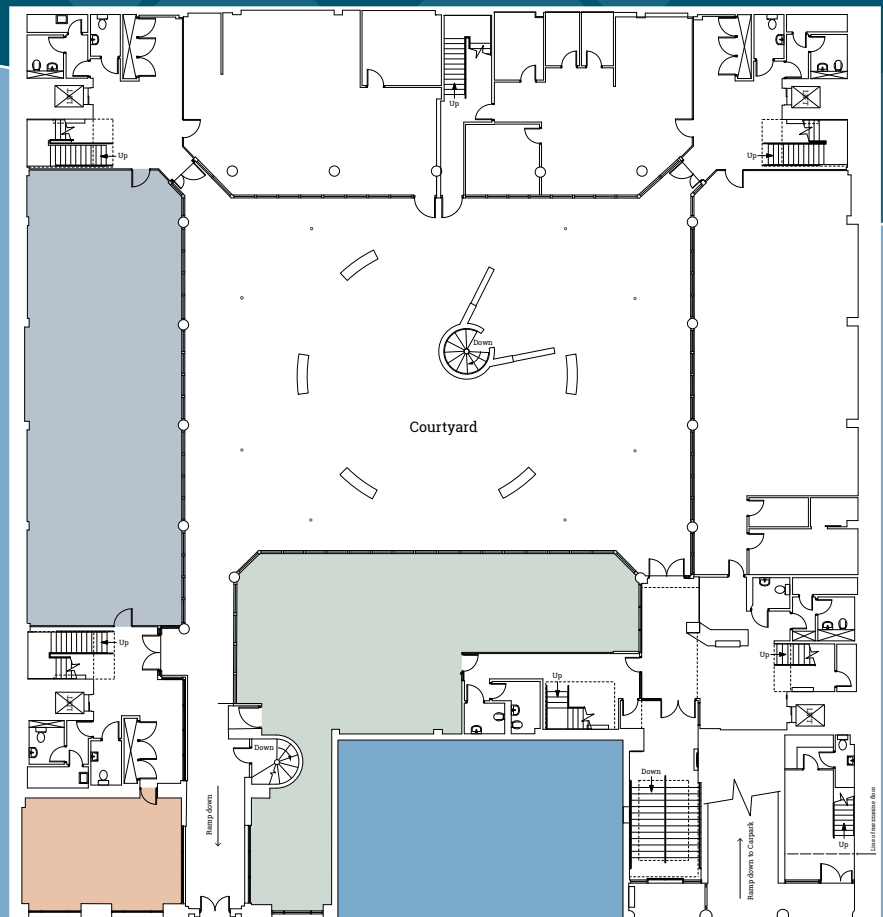
- ▲ Air conditioning
- ▲ LG7-compliant lighting
- ▲ Suspended ceiling
- ▲ Feature flooring and walls
- ▲ Bright, boutique style reception with secure access control
- ▲ 24-hour access
- ▲ Secure basement parking
- ▲ Lift access to all floors
- ▲ Landscaped central courtyard
- ▲ Refurbished WCs throughout
- ▲ DDA access



30 St. Paul's Square is split into North, East, South and West wings, enclosing a landscaped private courtyard.

The building also uniquely features two frontages: one contemporary, the other traditional stonework.

	Sq ft	Sq m
Suite A	467	43
Suite B	1,873	174
Suite F	1,809	168



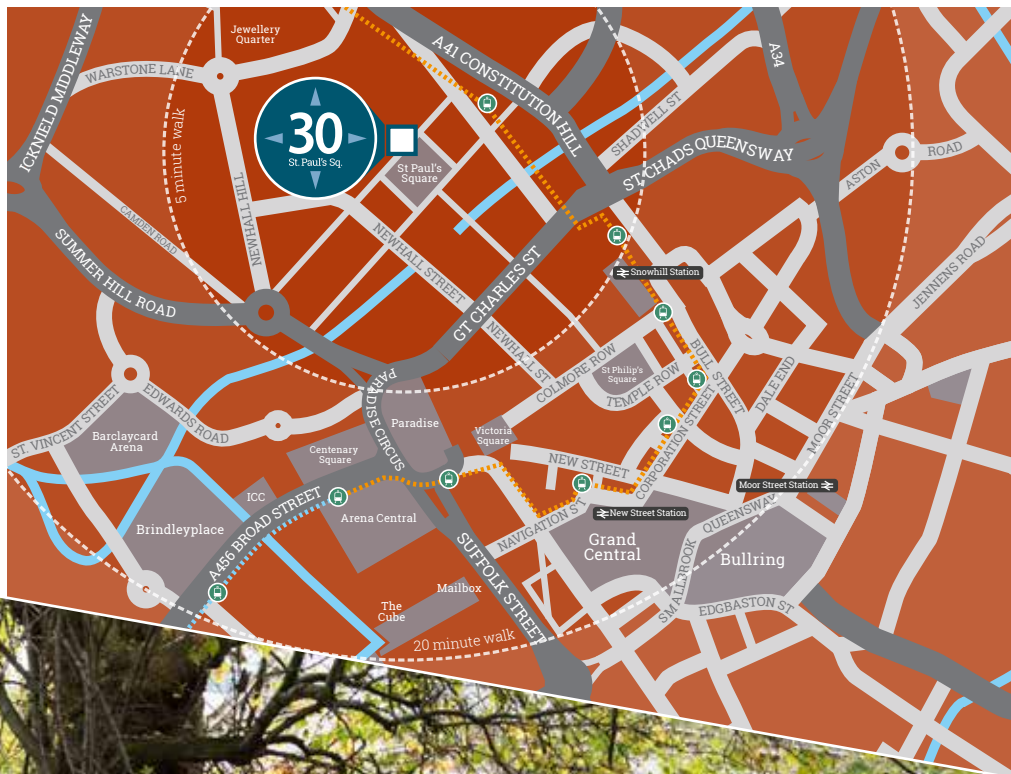
Floors have been measured on a Net Internal Basis and are approximate

Ground floor floorplan

# perfectly located

Getting to St. Paul's Square couldn't be easier. A dedicated Midland Metro tram stop and the nearby Snow Hill Station offer convenient public transport on the doorstep.

Additional bus and rail options in the city centre – less than a ten minute stroll away – put local and national destinations within easy reach. Travelling by car is also stress-free, with the nearby A38 providing speedy access to the national motorway network. And with onsite basement parking, the days of playing 'hunt the parking space' are a thing of the past.



Existing Metro line  
Metro Extension





30  
St. Paul's Sq.

 Metro Stops  
St. Paul's Square, St. Chads,  
Bull Street, Corporation  
Street, Grand Central,  
Birmingham Town Hall,  
Library of Birmingham

- |                          |                      |
|--------------------------|----------------------|
| 1. Snow Hill Station     | 10. Jam House        |
| 2. New Street Station    | 11. The Rectory      |
| 3. Paradise              | 12. Bullring         |
| 4. Snow Hill development | 13. Grand Central    |
| 5. Arena Central         | 14. Library          |
| 6. St. Paul's Square     | 15. Centenary Square |
| 7. Cucina Rustica        | 16. Indian Brewery   |
| 8. Stirling Bar          | 17. Itihaas          |
| 9. Saint Paul's House    | 18. Philpotts        |

## exciting city

St. Paul's Square is situated within close proximity to the retail and commercial core of Birmingham city centre.

In recent years, the UK's Second City has seen unprecedented levels of investment in its redevelopment, and the impending arrival of the 2022 Commonwealth Games and HS2 high speed rail link make Birmingham an exciting place to live, work and play.



Despite being just a short walk from the bustling city centre, the area has a serene charm that plays host to a vibrant bar and restaurant scene.



[30stpaulssquare.co.uk](http://30stpaulssquare.co.uk)



**CUSHMAN & WAKEFIELD**

**0121 697 7333**

[cushmanwakefield.co.uk](http://cushmanwakefield.co.uk)

Experience it for yourself

Scott Rutherford  
[scott.rutherford@eur.cushwake.com](mailto:scott.rutherford@eur.cushwake.com)  
 0121 710 5785

**Disclaimer:** Cushman & Wakefield for themselves and for the vendors or lessors of this property, whose agents give notice that: a) all particulars are set out as general outline only for the guidance of intending purchasers or lessees, and do not comprise part of an offer or contract; b) all descriptions, dimensions, references to condition and necessary permissions for use and occupation, and other details are given in good faith and are believe to be correct but any intending purchasers or tenants should not rely on them as statements or representations of fact but must satisfy themselves by inspection or otherwise as to the correctness of each of them. c) no person in the employment of Cushman & Wakefield has any authority to make any representation of warranty whatsoever in relation to this property. Designed and produced by Core | [www.core-marketing.co.uk](http://www.core-marketing.co.uk) | 0121 232 5000. March 2020