

**207 Sloane Street, Knightsbridge, SW1****4<sup>th</sup> Floor - 2,460 sq ft (228.5 sq m)****Location**

207 Sloane Street is situated close to the junction with Knightsbridge. The property benefits from excellent amenities on its doorstep, such as Harrods, Harvey Nichols and the retail and restaurants on Sloane Street and Brompton Road.

The nearest underground station is Knightsbridge (Piccadilly Line) which is a one minute walk away.

**Description**

207 Sloane Street benefits from a high quality fit out which includes a reception area, boardrooms, meeting rooms and a kitchen. There are 2 parking spaces available, on a separate licence, and secure bike storage.

**Features**

- Commissionaire
- Fitted accommodation
- VRF air-conditioning
- Suspended ceiling
- Raised floors
- Exceptional natural light
- 2 x Passenger lifts
- 2 Car parking spaces via separate license.
- Bike storage
- Showers



For more information or to arrange a viewing please contact:

**James Taylor**

+44 (0)20 7152 5166

[James.Taylor@cushwake.com](mailto:James.Taylor@cushwake.com)

**Joel Randall**

+44 (0)20 7152 5517

[Joel.Randall@cushwake.com](mailto:Joel.Randall@cushwake.com)

**Shane Corrigan**

+44 (0)20 7152 5917

[Shane.Corrigan@cushwake.com](mailto:Shane.Corrigan@cushwake.com)

**Or our joint agents:**

**Allsop**

020 7543 6780

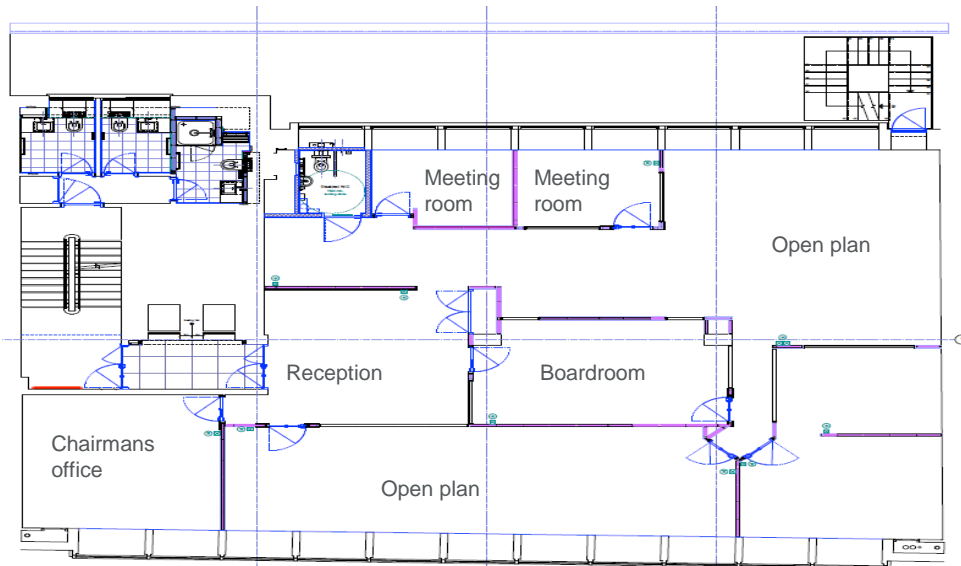
Floor	Size (sq ft)	Size (sq m)
4 <sup>th</sup>	2,460	228.5

Costs	Per sq ft exclusive
Rent	£62.50
Rates	c.£28.44
Service Charge	TBC

**Terms**

A new flexible lease direct from the Landlord, up to a term of 5 years.

### Current Fitted Floor plan



### Location

