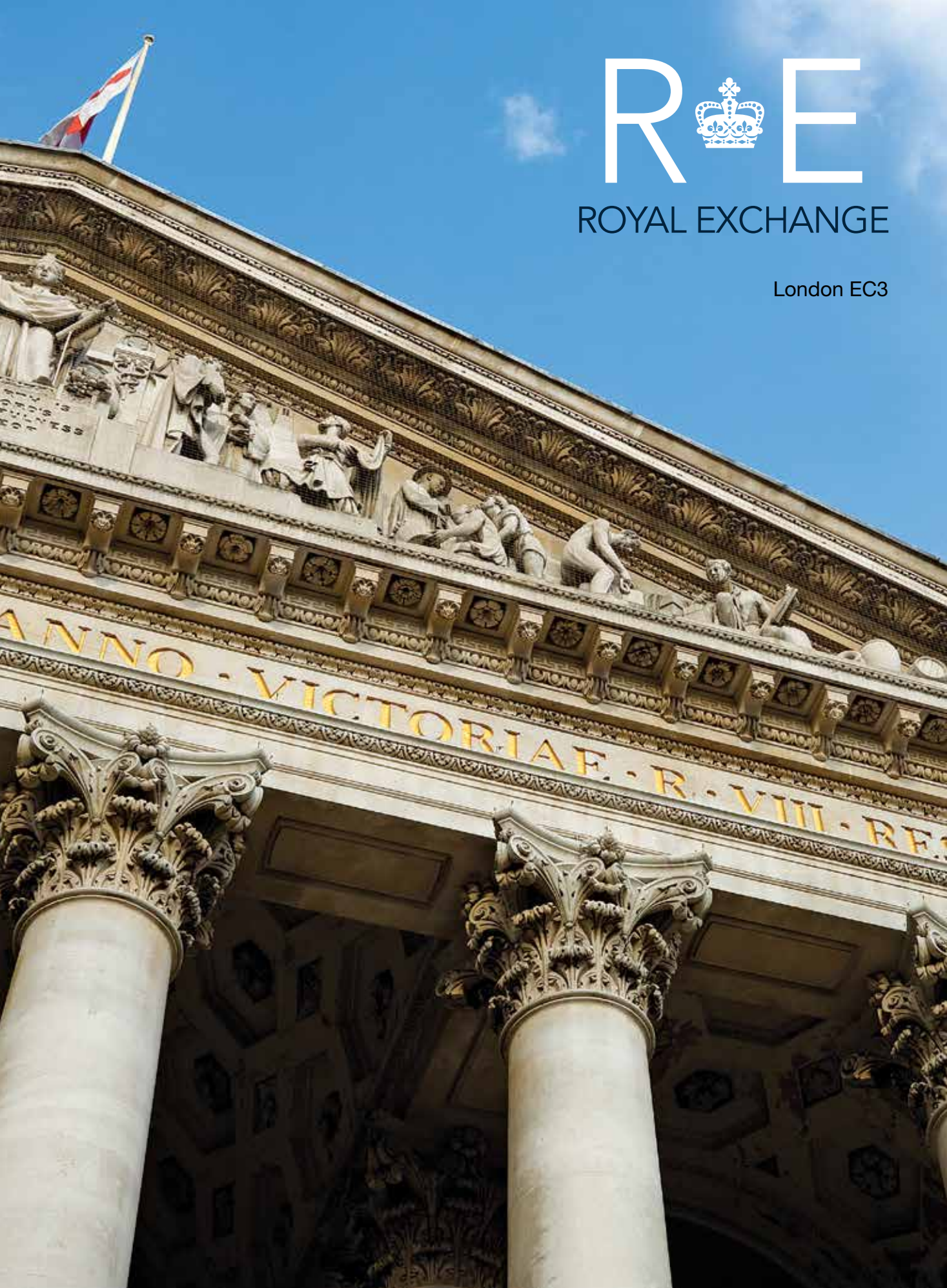




R E

ROYAL EXCHANGE

London EC3



History

The Royal Exchange is a historic and instantly recognisable building, prominently located on an island site bordered by Cornhill and Threadneedle Street.

The current building, completed in 1844 and designed by Sir William Tite, is the third Royal Exchange to stand on the site.



Specification

- Fully refurbished to Category A
- VRV air conditioning
- New LED lighting
- Suspended ceilings
- Raised floors
- Original listed features
- Male, female and disabled WC's
- 3 manned receptions, 6 passenger lifts
- World famous luxury retail onsite



Fourth floor

15,403 sq ft / 1,431 sq m

The upper floor provides exceptional office accommodation overlooking The Bank of England, whilst luxury retail, bars and restaurants are located on the ground floor.

The floorplates are set around a large internal courtyard which provides excellent natural light throughout.



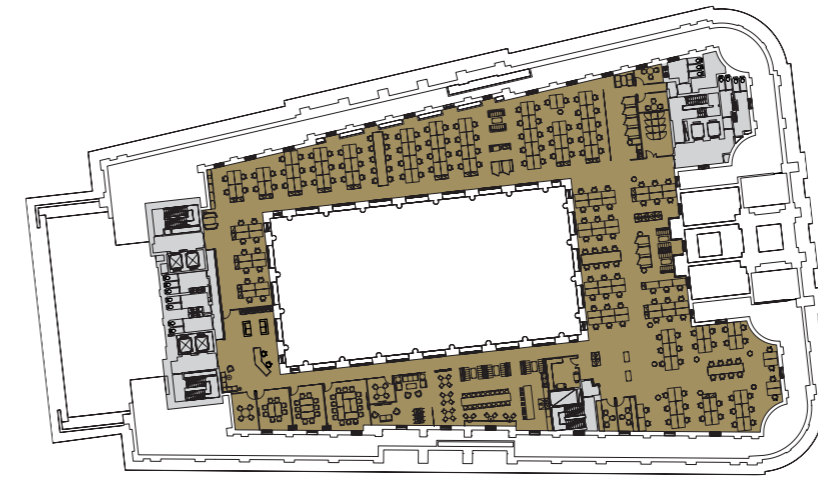
Floor plan

Unit	sq ft	sq m
Fourth Floor	15,403	1,431

- Office
- Core

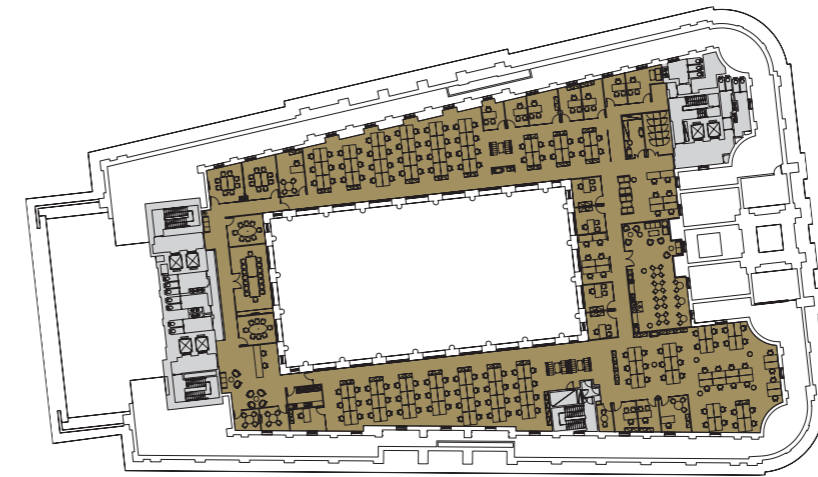


Space plan



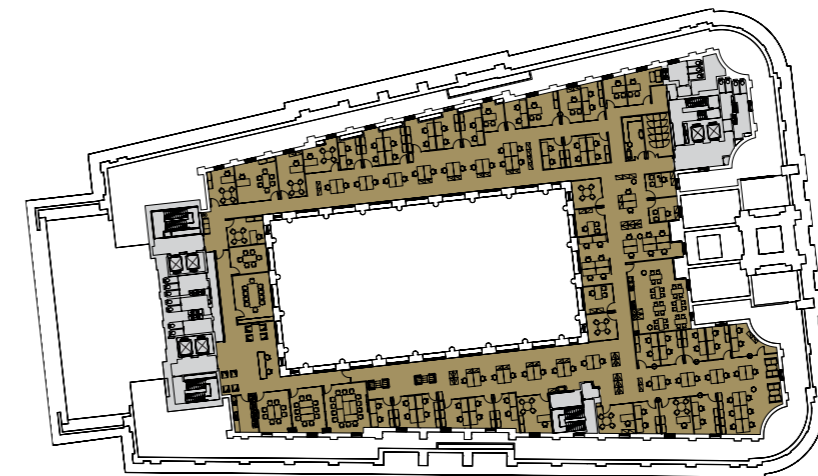
01. Open Plan Layout

Facility	QTY
Reception	1
Client waiting area	1
Cloaks / Coffee	1
Open Plan	163
Hot Desk Space	26
Meeting Room (14 person)	1
Meeting Room (10 person)	4
Meeting Room (8 person)	1
Meeting Room (4 person)	2
Phone Booths	10
Tea Point / Breakout Area	1
Comms Room	1
Coffee Point	1
Print / Copy Room / Area	3
TOTAL HEAD COUNT	189
DENSITY SQ FT	1:7.5
DESITY SQ M	1:81



02. Corporate Layout

Facility	QTY
Reception	1
Client waiting area	1
Open plan	156
Offices	16
Boardroom	1
Meeting Room (8 person)	4
Meeting Room (8 person)	2
One To One	1
Tea Point / Breakout Area	1
Print / Copy Room / Area	3
TOTAL HEAD COUNT	174
DENSITY SQ FT	1:8
DESITY SQ M	1:88



03. Cellular Layout

Facility	QTY
Reception	1
Client waiting area	1
Cloaks / Coffee	1
Open Plan	54
Office (1 person)	17
Office (2 person)	24
Meeting Room (14 person)	1
Meeting Room (10 person)	1
Meeting Room (8 person)	2
Meeting Room (6 person)	1
Meeting Room (4 person)	2
Comms Room	1
Print / Copy Room / Area	2
TOTAL HEAD COUNT	121
DENSITY SQ FT	1:12
DESITY SQ M	1:27

Location

The Royal Exchange is situated on an island site bordered by Cornhill and Threadneedle Street, overlooking The Bank of England.

The building is one of the City's premier retail destinations and the surrounding area offers a wide variety of shops, restaurants and leisure facilities.

01. Facade details
02. Church's
03. Smythson
04. Watches of Switzerland
05. Royal Exchange Grind
06. Luxury retail
07. Grand Café
08. Panino Giusto
09. Links of London



Retail

- Agent Provocateur
- Aspinal Of London
- Boodles
- Bremont
- Castle Fine Art
- Church's
- Crockett & Jones
- Georg Jensen
- Halcyon Days
- Hermès
- Jo Malone London
- Leica Camera Ltd
- Links Of London
- L'Occitane
- Lulu Guinness
- Montblanc
- Oppermann
- Orlebar Brown
- Omega
- Paul Smith
- Penhaligon's
- Pretty Ballerinas
- Royal Exchange Jewellers
- Sage Brown
- Searle and Co. Jewellers
- Smockers Paradise London
- Smythson
- Tateossian
- Theo Fennell
- Thomas Pink
- Tiffany & Co
- Watches Of Switzerland
- Watchfinder & Co

Restaurants & Bars

- Grande Café
- Imperial City
- Sauterelle
- The Gallery
- Threadneedle Bar

Transport

The building benefits from excellent transport connections with Bank station on the doorstep which provides access to the Central, Northern, Waterloo & City and DLR lines.

Cannon Street, Fenchurch Street, Mansion House, Monument and Liverpool Street are all within a short walking distance.

In addition, Crossrail services will run from nearby Moorgate from December 2018.



Local occupiers

01. Bank of England
02. Fidessa
03. UBS Global Asset Management
04. AXA UK PLC
05. Toronto Dominion
06. Lloyds TSB
07. Deutsche Bank
08. JP Morgan Cazenove
09. City of London Corporation
10. VTB
11. Aberdeen Asset Management
12. NM Rothschild & Sons
13. AVIVA
14. White & Case
15. Peel Hunt
16. Legal & General
17. Bank of China
18. RSA
19. XL Capital Group
20. Allianz
21. Catlin
22. Diawa
23. BlackRock
24. ING

Lease

Available on a new lease for a term by arrangement from the Landlord.

EPC

The Energy Performance Certificate rating for the Royal Exchange is B (48).

www.eneroyalexchange.com

Further information

Viewing by appointment with the joint letting agents Hall Kemp and Cushman & Wakefield.

Tom Kemp

T 020 7100 5555
E tom.kemp@hallkemp.com

Stephen Foster

T 020 7100 5555
E stephen.foster@hallkemp.com

James Oliver

T 020 3296 2004
E james.oliver@cushwake.com

Alex Novelli

T 020 3296 2133
E alex.novelli@cushwake.com

