

Pacific House

PACIFIC HOUSE

Unit 5 - 627 sq ft

Sovereign Harbour Innovation Park

AVAILABLE NOW

Office Space for rent in high quality business centre

Flexible leases



PROPERTY FEATURES

LOCATION

Sovereign Harbour Innovation Park is three miles from Eastbourne town centre and along a bus route. Pacific House is just five minutes' walk from the waterfront restaurants, cafes, wine bars and boutique shops of Sovereign Harbour. It is also next to a retail park with a large supermarket, shops, a gym, multiplex cinema and ample free parking.

DESCRIPTION

Pacific House offers a total of 25,235 sq.ft of high quality office space, together with 130 car parking spaces. A central atrium allows light into the centre of the building and provides tea points, circulation and break out space where occupiers can interact.



SeaChange
SUSSEX

Unit 5, Pacific House
Sovereign Harbour Innovation Park, Eastbourne, BN23 6FA

Contact us

Chris Broome



chrisbroome@seachangesussex.co.uk

Sean Whelan



seanwhelan@seachangesussex.co.uk



01424 858288

UNIT PARTICULARS

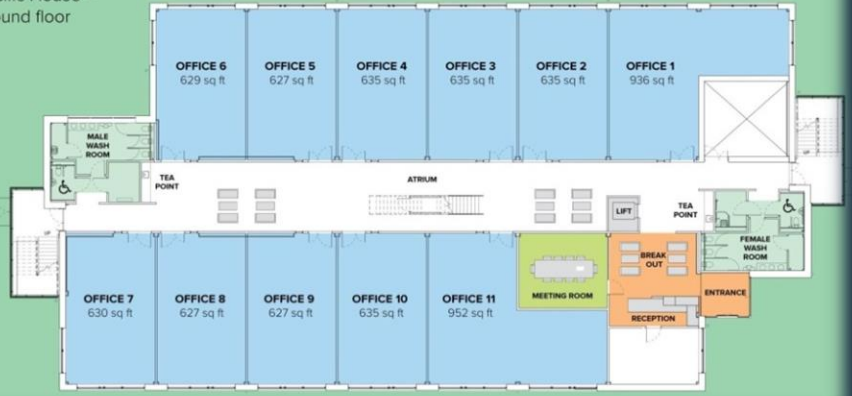
* Rent psf	£17.00
* Service Charge %	2.48%
** Service Charge 2022/23 psf	£8.97
* Total annual rent	£10,659
** Total annual service charge 2022/23	£5,625
*** Rateable Value (unit only)	£8,600
Rateable Value (car spaces only)	£750

* Prices shown are exclusive of VAT

** Service charges can fluctuate over a financial year depending on operational expenditure, although the % will remain the same

*** May qualify for some Small Business Rate Relief

Pacific House – ground floor



LEASE TERMS

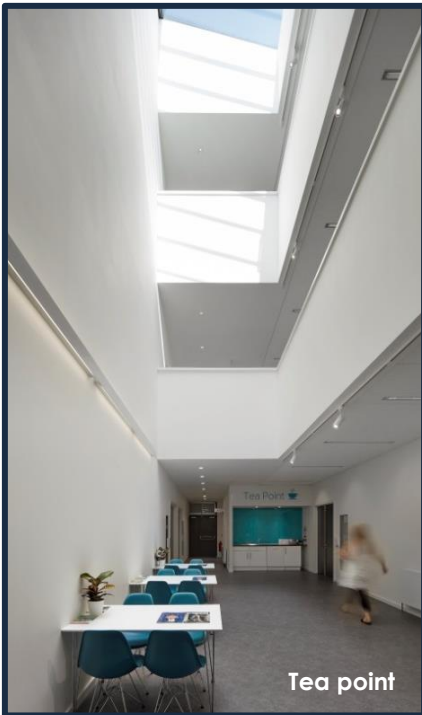
Our straightforward, flexible leases are 3-year agreements with only three months' notice required.

Longer leases are available on request.

The service charge payable is a proportion of the total cost of the maintenance and running of the building and is reviewed annually.

A deposit equivalent to three months' rent is also required which is refundable under the lease terms.

Rent and service charges are invoiced quarterly in advance and clients can opt to pay monthly by direct debit.



ACCOMMODATION & AMENITIES

Striking, Grade A building

Fully DDA compliant

24/7 access, 365 days a year

Building security and alarms

3 allocated car parking spaces and bicycle shelters

Staffed Reception 8.30am to 1.00pm

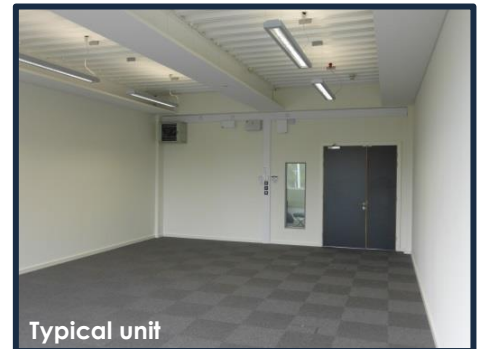
Dedicated meeting room

Kitchen and shower facilities

EPC A(23) building with LED lights throughout

Double height central atrium

Particulars produced on 4th July 2022



East Sussex Energy Infrastructure & Development Limited trading as Sea Change Sussex (Company Number 0763295) the registered office of which is at Innovation Centre, Highfield Drive, St Leonard's, East Sussex, TN38 9UH, its subsidiaries (as defined in section 736 of the Companies Act 1985) associated companies and employees ("we") give notice that: Whilst these particulars are believed to be correct no guarantee or warranty is given, or implied therein, nor do they form any part of a contract. [We do our best to ensure all information in this brochure is accurate. If you find any inaccurate information please let us know and where appropriate, we will correct it.] We make no representation that information is accurate and up to date or complete. We accept no liability for any loss or damage caused by inaccurate information. [This brochure gives a large amount of [statistical] information and there will inevitably be errors in it.] Intending purchasers or tenants should not rely on the particulars in this brochure as statements or representations of fact but should satisfy themselves by inspection or otherwise as to the correctness of each of them. We provide this brochure free of charge and on the basis of no liability for the information given. In no event shall we be liable to you for any direct or indirect or consequential loss, loss of profit, revenue or goodwill arising from your use of the information contained herein. All terms implied by law are excluded to the fullest extent permitted by law. No person in our employment has any authority to make or give any representation or warranty whatsoever in relation to the property. We recommend that legal advice is taken on all documentation before entering into a contract. SUBJECT TO CONTRACT.