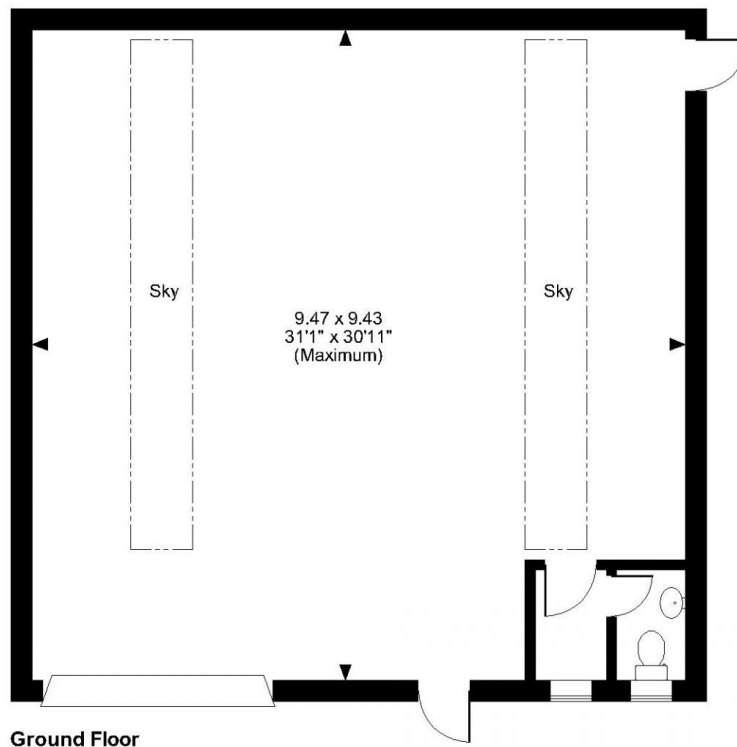


# Floor Plans

UNIT 55 - 960 SQ FT | **MOUNTHEATH TRADING ESTATE**

Ardent Way, Prestwich, M25 9WE

**Mountheath Trading Estate, Ardent Way, Prestwich**  
Approximate Gross Internal Area  
961 Sq Ft/89 Sq M



Ground Floor

**FOR ILLUSTRATIVE PURPOSES ONLY - NOT TO SCALE**

The position & size of doors, windows, appliances and other features are approximate only.  
© ehouse. Unauthorised reproduction prohibited. Drawing ref. dig/8598935/NGS